

Paris, la pluie

Paris Music Tales
www.paris-music-tales.com
Album "Grabuge" (2018)

Music by Martin Gioani

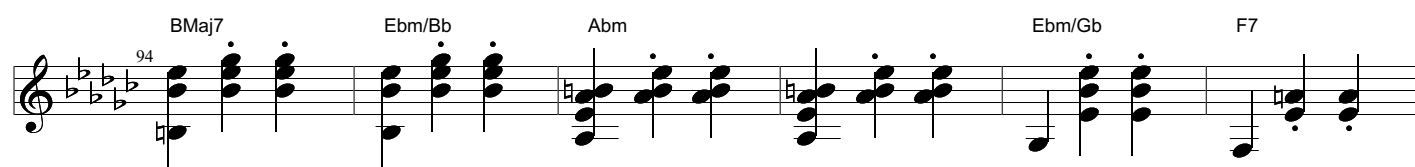
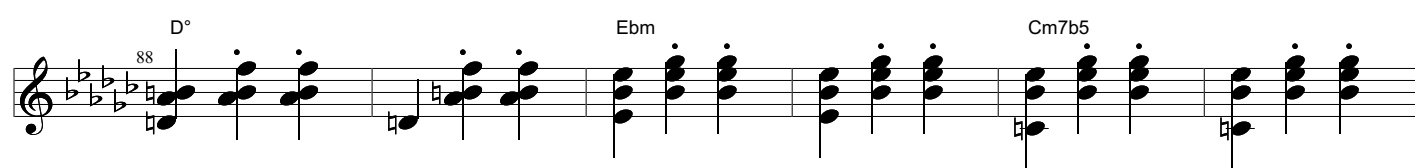
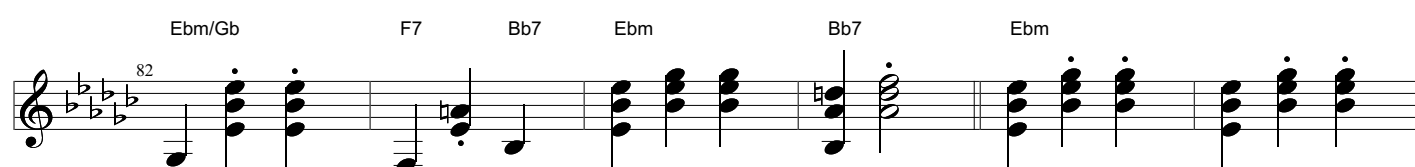
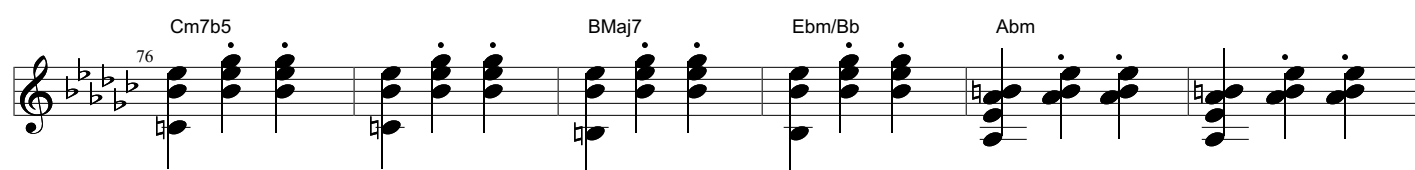
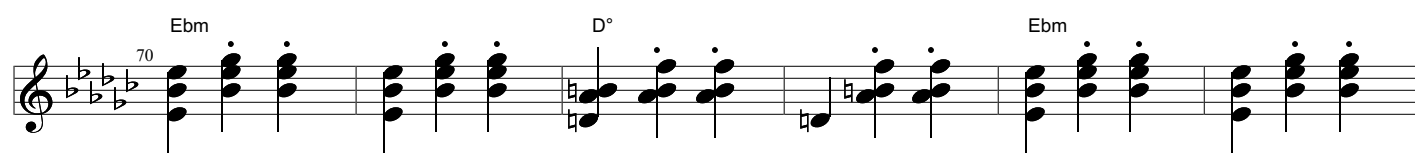
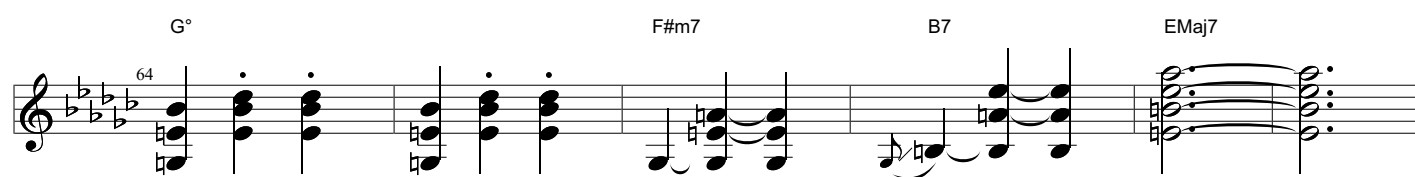
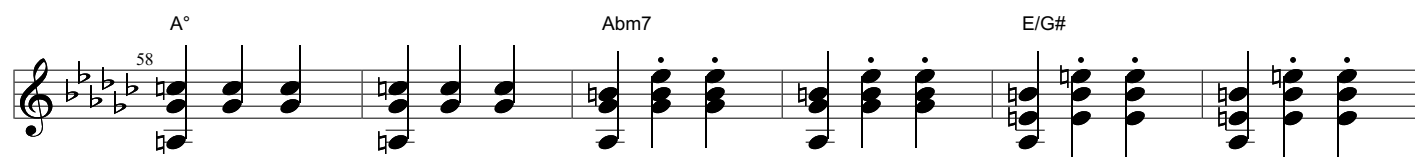
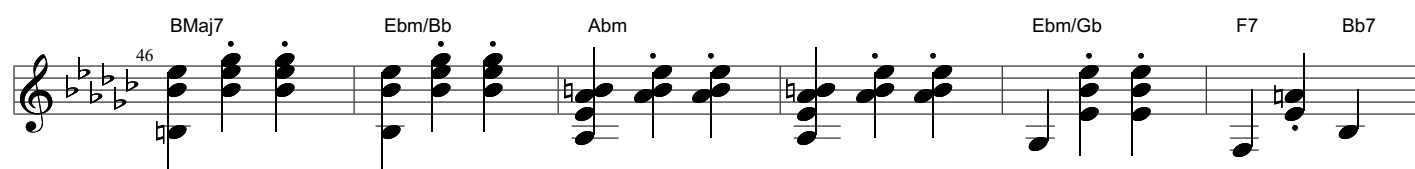
Standard tuning

Moderate ♩ = 178

S-Gt

The guitar score is written in standard notation on a single staff. It begins with a treble clef, a key signature of three flats (B-flat, E-flat, A-flat), and a 3/4 time signature. The first measure is a whole rest, followed by a double bar line. The second measure starts with a first finger position (1) and a forte (f) dynamic marking. The score consists of nine lines of music, each containing four measures. Chord symbols are placed above the staff at the beginning of each measure. The chords are: Ebm, D°, Ebm, Cm7b5, BMaj7, Ebm/Bb, Abm, Ebm/Gb, F7, Bb7, Ebm, D°, Ebm, Eb7, Abm7, Db7, Gb6, B7, Fm7b5, Bb7, Abm6, A°, Bb7, Ebm, D°, Ebm, and Cm7b5. The score ends with a double bar line.

Chord symbols: Ebm, D°, Ebm, Cm7b5, BMaj7, Ebm/Bb, Abm, Ebm/Gb, F7, Bb7, Ebm, D°, Ebm, Eb7, Abm7, Db7, Gb6, B7, Fm7b5, Bb7, Abm6, A°, Bb7, Ebm, D°, Ebm, Cm7b5.



Ebm Eb7 Abm7 Db7

106

Gb 6 B7 whole transcriptions available (15 songs) ->

112

www.paris-music-tales.com

116